

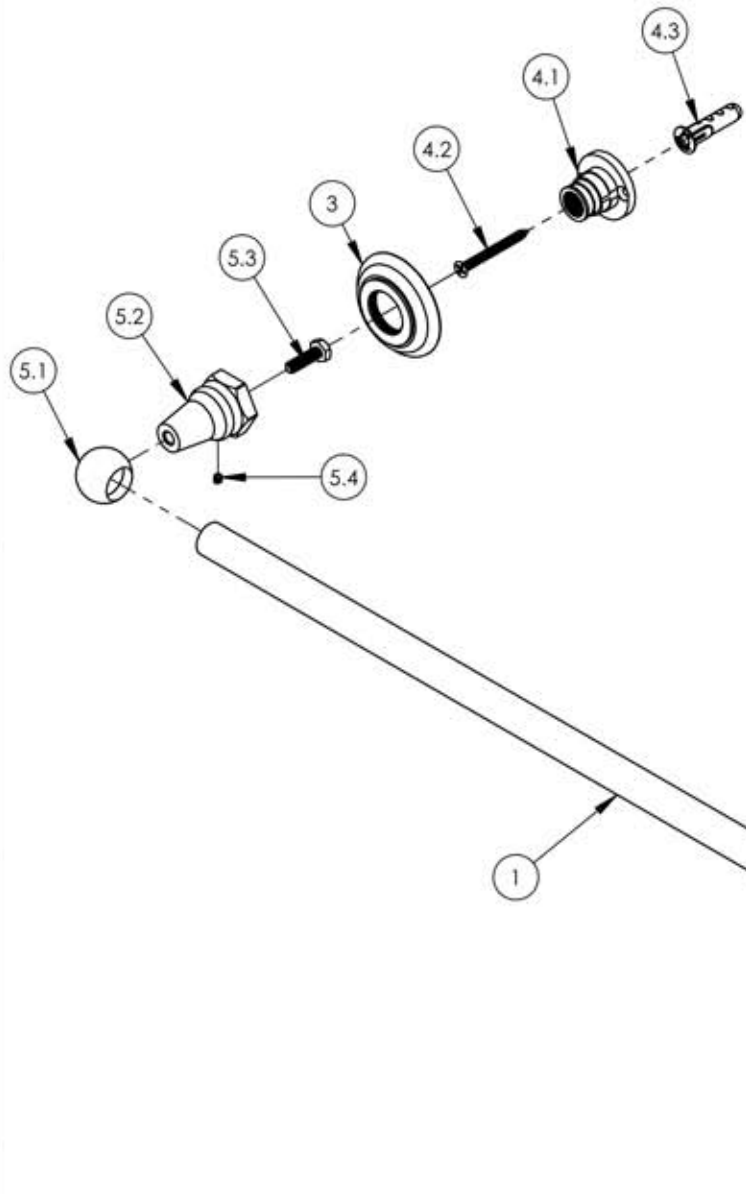
A

B

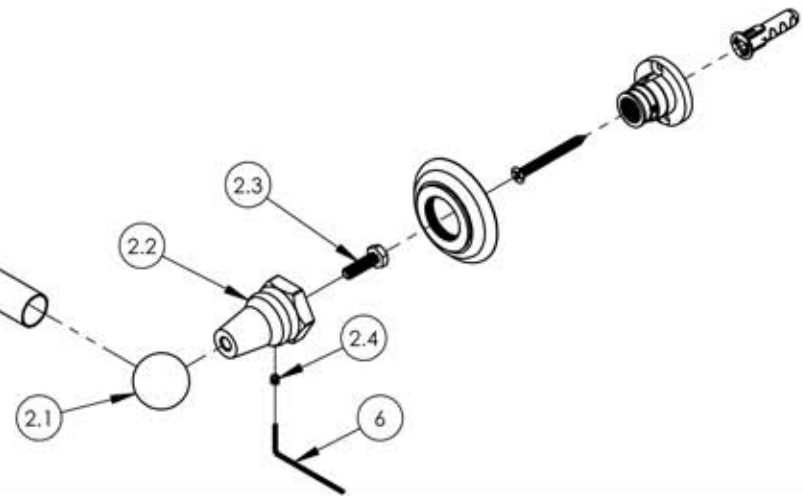
C

D

E



ITEM NO.	PART NUMBER	DESCRIPTION	QTY.
1	P23074/00	24" KLD TOWEL BAR	1
2	3-563/00	ASSY. BALL END W/ POST BASE. RIGHT	1
2.1	11081/00	END BALL. TOWEL BAR. 500 SERIES	1
2.2	11076/00	POST, 500 SERIES	1
2.3	92232	HEX HEAD CAP SCREW, 1/4-20, 7/8" L	1
2.4	92008	SET SCREW, CUP POINT 8-32, 3/16" L.	1
3	10619/00	ESCUTCHEON, TRADITIONAL LAV 1"-20	2
4	3-568	ASSY. WALL MOUNT HARDWARE KIT	2
4.1	11050	MOUNTING KIT, WALL FLANGE	1
4.2	92043	SCREW, FLAT HD #10 SIZE W/ #2 PHIL DRIVE, 2"L	1
4.3	92046	ANCHOR SCREW 3/8" HOLE, TOGGLER AF10	1
5	3-569/00	ASSY. BALL END W/ POST BASE. LEFT	1
5.1	11081/00	END BALL TOWEL BAR, 500 SERIES	1
5.2	11076/00	POST, 500 SERIES	1
5.3	92232	HEX HEAD CAP SCREW, 1/4-20, 7/8" L	1
5.4	92008	SET SCREW, CUP POINT 8-32, 3/16" L.	1
6	P39001	5/64 HEX KEY	1



ALL	C	UPDATED DRAWING AND COMPONENTS	11/12/2018	RAH
ZONE	REV.	DESCRIPTION	DATE	APPROVED
REVISIONS				

1261 LOGAN AVENUE COSTA MESA, CALIFORNIA 92626 PHONE: 714.361.4800 FAX: 714.617.3120		<h1>PHYLORICH®</h1> <p>Defining Luxury Since 1959</p>	PROPRIETARY AND CONFIDENTIAL <small>THE INFORMATION CONTAINED IN THIS DRAWING IS THE SOLE PROPERTY OF R3S MANUFACTURING. ANY REPRODUCTION IN PART OR AS A WHOLE WITHOUT THE WRITTEN PERMISSION OF R3S MANUFACTURING IS PROHIBITED.</small>
---	--	---	--

-		-		INTERPRET GEOMETRIC DIMENSIONING & TOLERANCING IN ACCORDANCE WITH ASME Y14.5-2009 & ASME Y14.41-2003 STANDARDS. UNLESS OTHERWISE SPECIFIED, DIMENSIONS ARE IN INCHES. TOLERANCES ARE: FRACTIONS ±1/64" DECIMALS X.X: ±.1 ANGULAR X.XX: ±.01 X.XXX: ±.005		
NEXT ASSY	USED ON	APPLICATION		MATERIAL	FINISH	DO NOT SCALE DRAWING
DRAWN	DATE	CHECKED	GRE	NAME	DATE	
	4/23/2014					

TOWEL BAR 24", HEX TRADITIONAL SERIES

SIZE	ASM/PRT NO.	REV
A	500-71/00	C
SCALE: 1:4	WEIGHT: lbs.	SHEET 1 OF 2

5

4

3

2

1